

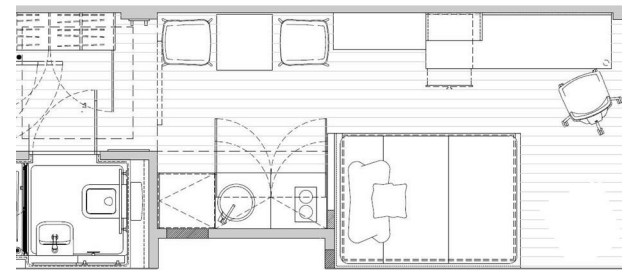


Merchant Studios | | Glasgow | G4 0AJ

£199 Per week



Merchant Studios |  
Glasgow | G4 0AJ  
£199 Per week



GLASGOW | STUDENT | SEPTEMBER

- Social and study spaces
- 24-hour gym
- High speed Wi-Fi
- Utilities including water and heating
- Strong community
- Outdoor courtyard
- Onsite laundry facilities
- Contents insurance
- Excellent location
- Student only

Energy Efficiency Rating		Current	Potential
<i>Very energy efficient - lower running costs</i>			
(92 plus) <b>A</b>			
(81-91) <b>B</b>			
(69-80) <b>C</b>			
(55-68) <b>D</b>			
(39-54) <b>E</b>			
(21-38) <b>F</b>			
(1-20) <b>G</b>			
<i>Not energy efficient - higher running costs</i>			
<b>Scotland</b>		EU Directive 2002/91/EC	

Lower Ground Floor  
27 Ridley Place  
Newcastle upon Tyne  
Tyne and Wear  
NE1 8JN  
0191 6403450  
info@propertybynest.co.uk